



NCEC
Part of Ricardo

European Poison Centres

Jon Gibbard | Practice Director

Poison centre notifications

Annex VIII

- Information requirements
- Mixtures in a mixtures
- Generic identifiers
- Group submissions
- Enforcements

Next steps from ECHA

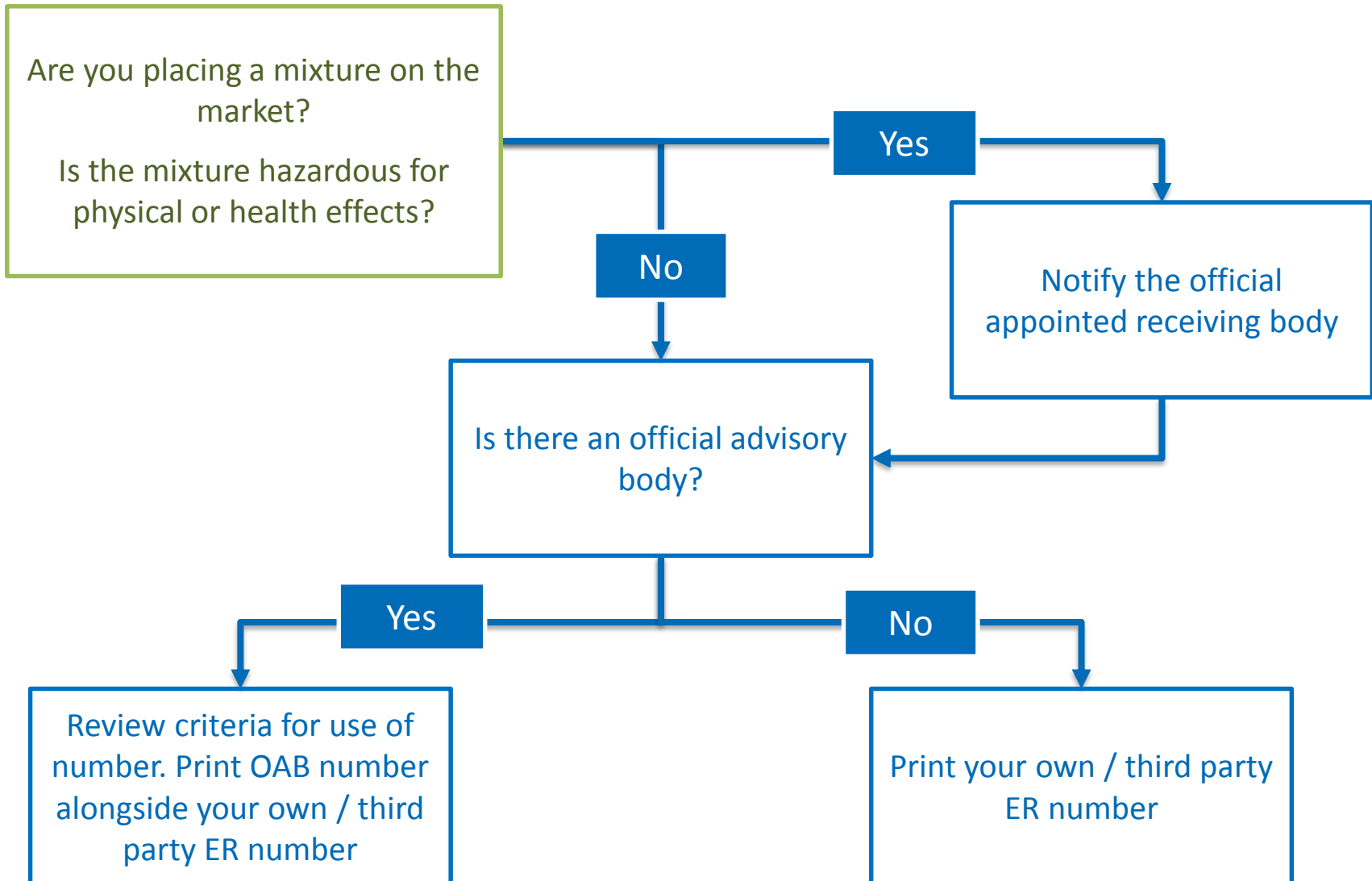
Annex VIII to CLP



European
Commission

Do the regulations apply to your range of products?





Timeline

2020

- Consumer mixtures

2021

- Professional mixtures

2024

- Industrial mixtures

2025

- Pre-Annex VIII submissions expire

What information is needed?



Unique Formula Identifier

UFI JY10-Y0JM-W006-8975



Danger

Highly flammable liquid and vapour
Toxic if swallowed, in contact with skin or if inhaled
Causes serious eye irritation
Causes damage to organs (central nervous system, optic nerve)

Keep away from heat, hot surfaces, sparks, open flames and other ignition sources. No smoking
Take precautionary measures against static discharge
Wear eye protection, protective gloves, protective clothing
IF SWALLOWED: Immediately call a doctor
IF ON SKIN (or hair): Take off immediately all contaminated clothing. Rinse skin with water/shower
IF INHALED: Remove person to fresh air and keep comfortable for breathing

Formula X

Contains: methanol

NCEC
The Gemini Building
Fermi Avenue
Harwell
DIDCOT
Oxfordshire
OX11 0QR
United Kingdom

Tel: +44 (0) 1235 753 654

NCEC
Part of Ricardo



Mixture in a mixture (MIM)

100% Composition

Exact

or

Ranges

- Acute toxicity, category 1, 2 or 3
- Specific target organ toxicity - Single exposure, category 1 or 2
- Specific target organ toxicity - Repeated exposure, category 1 or 2
- Skin corrosion, category 1, 1A, 1B or 1C
- Serious eye damage, category 1

Actual Concentration	Max Width of Range
$\geq 25 - < 100$	5 % units
$\geq 10 - < 25$	3 % units
$\geq 1 - < 10$	1 % units
$\geq 0.1 - < 1$	0.3 % units
$>0 - < 0.1$	0.05 % units

Generic product identifiers



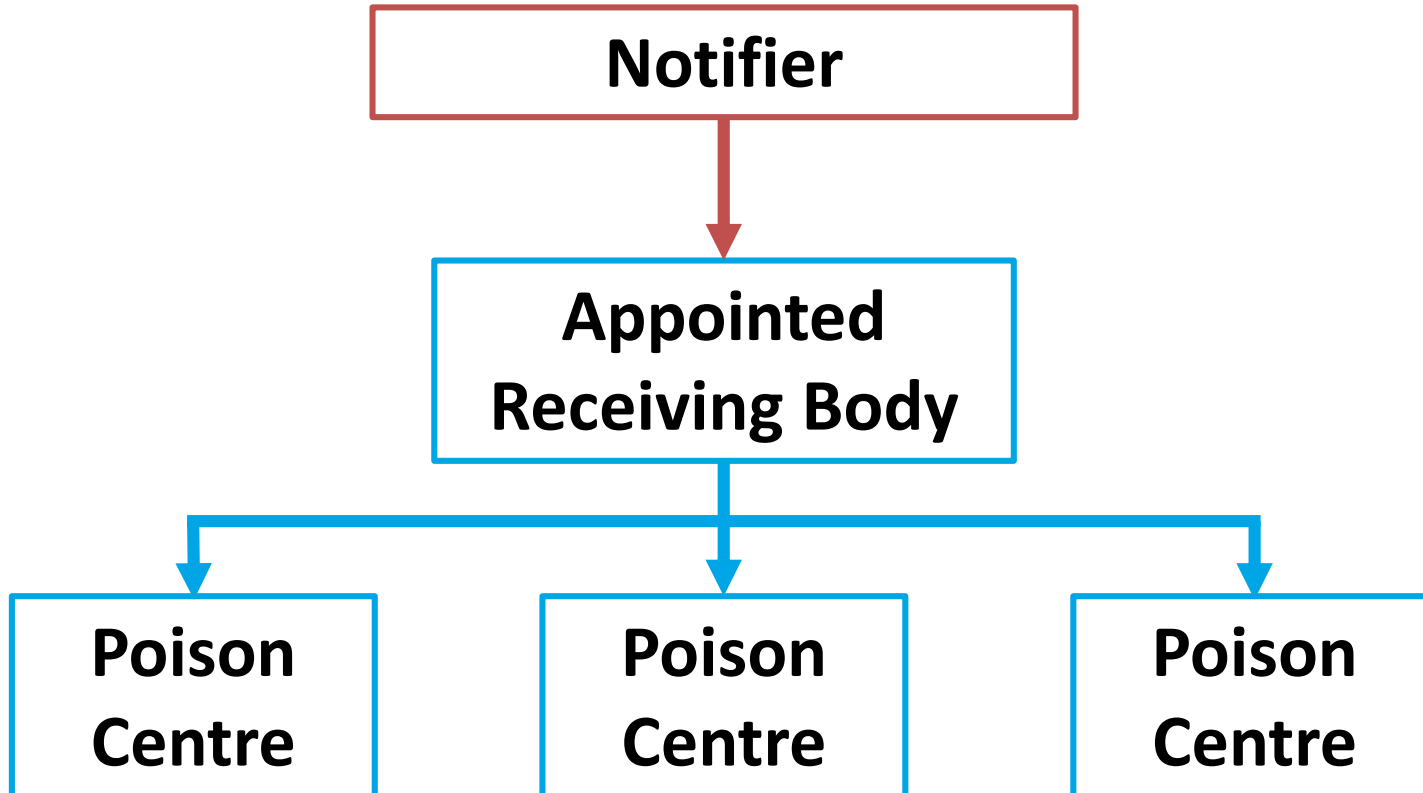


Identify if there is a reduced information requirement



Who is the appointed receiving body?


Article 45 of CLP





Fees

Harmonised Format

Administrative information 

Submitter information 

Product information 

Mixture information 

Mixture components 

* UFI 



+ Add UFI

* Physical state



* Colour



* pH

Is not relevant


* pH value



-

Solution concentration

%

* Toxicological
Information (Section 11
of SDS) 

Numbers to use in section 1.4 of the SDS



Enforcement action



Notification now or after 2020?



Next steps from ECHA



Questions?

Appended information follows

Jon Gibbard

NCEC, Ricardo Energy & Environment,
The Gemini Building,
Fermi Avenue, Harwell, Oxon. OX11 0QR
jonathan.gibbard@ricardo.com
+44 (0) 1235 75 3195

Checklist of information for notification

- The information that needs to be submitted is set out in Part B of Annex VIII and includes;
- Identification of the mixture and the submitter
- Product identifier of the mixture – the trade name or names (including the brand name or other names)
- The unique formula identifier (UFI) of the mixture
- The name, address, phone number and email address of the submitter
- Hazards identification and additional information
- Classification of the mixture (hazard class and category)
- Label elements
- Hazard pictogram codes
- Signal word
- Hazard statement codes, including supplemental hazard information codes
- Precautionary statement codes
- Toxicological information
- Description of the toxicity of the mixture or its components (as required in Section 11 of the Safety Data Sheet)
- Additional information
- Colour
- pH (where applicable)
- Physical state
- Packaging (type and size)
- Intended use (product categorisation code)
- Uses (consumer, professional, industrial)
- Product identifiers of the mixture components
- Chemical/trade name of the components
- CAS number (where applicable)
- EC number (where applicable)
- UFI (where applicable)
- Exact concentration or concentration ranges of the mixture components
- Classification of mixture components (substances and MIM)
- Hazard classification of each component (where applicable)
- Additional identifiers (where applicable and relevant for health response)