



Hazardous to the Aquatic Environment Harmonization Between GHS and TDG Criteria

SCHC 2017 Spring Meeting
Paul W. Brigandi

© CGI Group Inc. CONFIDENTIAL

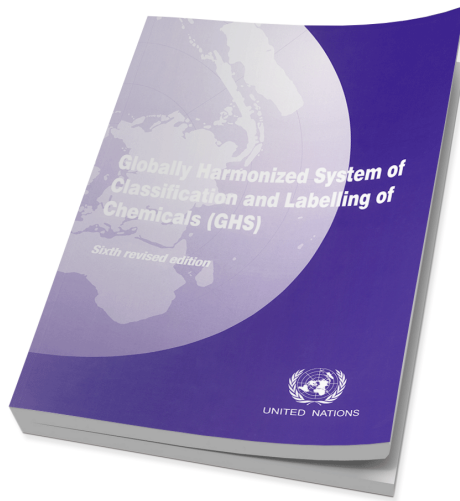
CGI

Experience the commitment®

Comparison of Hazardous to the Aquatic Environment Criteria

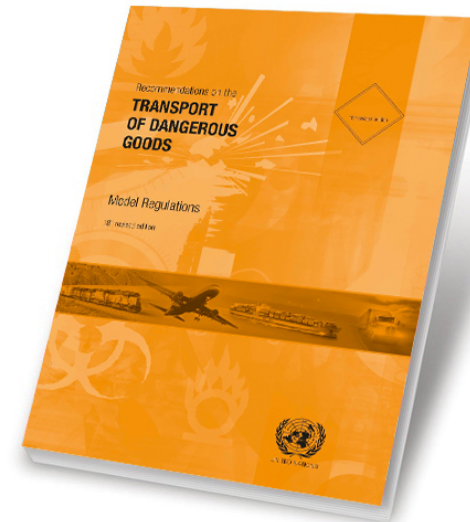
GHS

- 6th revised edition
- Chapter 4.1 Hazardous to the Aquatic Environment



TDG

- 19th revised edition
- Chapter 2.9 Class 9 – Miscellaneous Dangerous Substances and Articles, Including Environmentally Hazardous Substances



GHS Chapter 4.1 Hazardous to the Aquatic Environment

GHS paragraph: 4.1.1.7.3

The harmonized scheme is considered suitable for use for:

- **Packaged goods** in both supply & use
- **Multimodal transport** schemes
 - Elements of it may be used for **bulk land transport**
 - **Bulk marine** transport under MARPOL 73/78 Annex II insofar as this uses aquatic toxicity



Hazardous to the Aquatic Environment

GHS

- Classification criteria developed for:
 - **Three** acute categories, and
 - **Four** chronic categories (i.e. 3 core chronic categories)
 - The acute and chronic categories are **applied independently**
- The basic elements used for classification are:
 - Acute aquatic toxicity
 - Chronic aquatic toxicity
 - Potential for actual bioaccumulation
 - Degradation for organic chemicals

TDG

- Classification criteria developed for:
 - **One** acute categories, and
 - **Two** chronic categories
 - Substances shall be classified if they satisfy the criteria for Acute 1, and/or Chronic 1 or Chronic 2
- The basic elements used for classification are:
 - Acute aquatic toxicity
 - Chronic aquatic toxicity
 - Potential for actual bioaccumulation
 - Degradation for organic chemicals



Special Considerations

GHS

The classification scheme is intended to apply for all substances and mixtures, however, for some substances, e.g. metals and poorly soluble substances special guidance is necessary.

- Annex 9 – Guidance on Hazards to the Aquatic Environment
- Annex 10 – Guidance on Transformation/Dissolution of Metals and Metal Compounds in Aqueous Media

The annexes cover data interpretation and application of the criteria for special substances.

TDG

While the following classification procedure is intended to apply to all substances and mixtures, it is recognized that in some cases, e.g. metals or poorly soluble inorganic compounds, special guidance will be necessary².

² *This can be found in Annex 10 of the GHS.*

Abiotic degradation such as hydrolysis, primary degradation, both abiotic and biotic, degradation in non-aquatic media and proven rapid degradation in the environment may all be considered in defining rapid degradability³.

³ *Special guidance on data interpretation is provided in Chapter 4.1 and Annex 9 of the GHS*



Definitions

GHS

- ✓ Acute aquatic toxicity
- ✓ Short-term (acute) hazard
- ✓ Chronic aquatic toxicity
- ✓ Long-term (chronic) hazard
- ✓ NOEC (No Observed Effect Concentration)
- ✓ Bioaccumulation
- ✓ Degradation

TDG

- ✓ Acute aquatic toxicity
- ✓ Short-term (acute) hazard
- ✓ Chronic aquatic toxicity
- ✓ Long-term hazard
- ✓ NOEC (No Observed Effect Concentration)
- ✓ Bioaccumulation
- ✓ Degradation



4.1 Hazardous to the Aquatic Environment Classification Criteria for Substances



CGI

Experience the commitment®

Acute Classification Criteria

GHS
Table 4.1.1

(a) Short-term (acute) aquatic hazard

Category: Acute 1 (note 2)	
96 hr LC ₅₀ (for fish)	≤1 mg/L and/or
48 hr EC ₅₀ (for crustacea)	≤1 mg/L and/or
72 or 96hr ErC ₅₀ (for algae or other aquatic plants)	≤1 mg/L (note 3)
Category Acute 1 may be subdivided for some regulatory systems to include a lower band at L(E)C ₅₀ ≤ 0.1 mg/L	
Category: Acute 2	
96 hr LC ₅₀ (for fish)	>1 - ≤10 mg/L and/or
48 hr EC ₅₀ (for crustacea)	>1 - ≤10 mg/L and/or
72 or 96hr ErC ₅₀ (for algae or other aquatic plants)	>1 - ≤10 mg/L (note 3)
Category: Acute 3	
96 hr LC ₅₀ (for fish)	>10 - ≤100 mg/L and/or
48 hr EC ₅₀ (for crustacea)	>10 - ≤100 mg/L and/or
72 or 96hr ErC ₅₀ (for algae or other aquatic plants)	>10 - ≤100 mg/L (note 3)
Some regulatory systems may extend this range beyond an L(E)C ₅₀ of 100 mg/L through the introduction of another category.	

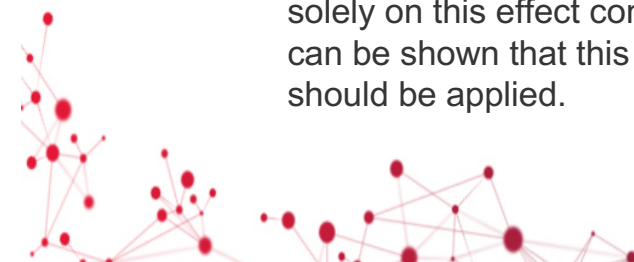
TDG
Table 2.9.1

(a) Short-term (acute) aquatic hazard

Category: Acute 1 (note 2)	
96 hr LC ₅₀ (for fish)	≤1 mg/L and/or
48 hr EC ₅₀ (for crustacea)	≤1 mg/L and/or
72 or 96hr ErC ₅₀ (for algae or other aquatic plants)	≤1 mg/L (note 3)

Note 2: When classifying substances as Acute 1 and/or Chronic 1 it is necessary at the same time to indicate an appropriate M factor to apply the summation method

Note 3: If the algal ErC₅₀ falls more than 100 times below the next most sensitive species and results in classification solely on this effect consideration should be give if this is representative of toxicity to aquatic plans. Where it can be shown that this is not the case, professional judgment should be used in deciding if classification should be applied.



Chronic Classification Criteria

GHS
Table 4.1.1

(b) Long-term (chronic) aquatic hazard

(i) **Non-rapidly degradable** substances (note 4) for which there are adequate chronic toxicity data available

Category Chronic 1: (Note 2)	
Chronic NOEC or EC _x (for fish)	≤ 0.1 mg/l and/or
Chronic NOEC or EC _x (for crustacea)	≤ 0.1 mg/l and/or
Chronic NOEC or EC _x (for algae or other aquatic plants)	≤ 0.1 mg/l
Category Chronic 2:	
Chronic NOEC or EC _x (for fish)	≤ 1 mg/l and/or
Chronic NOEC or EC _x (for crustacea)	≤ 1 mg/l and/or
Chronic NOEC or EC _x (for algae or other aquatic plants)	≤ 1 mg/l

TDG
Table 2.9.1

(b) Long-term (chronic) aquatic hazard

(i) **Non-rapidly degradable** substances (note 4) for which there are adequate chronic toxicity data available

Category Chronic 1: (Note 2)	
Chronic NOEC or EC _x (for fish)	≤ 0.1 mg/l and/or
Chronic NOEC or EC _x (for crustacea)	≤ 0.1 mg/l and/or
Chronic NOEC or EC _x (for algae or other aquatic plants)	≤ 0.1 mg/l
Category Chronic 2:	
Chronic NOEC or EC _x (for fish)	≤ 1 mg/l and/or
Chronic NOEC or EC _x (for crustacea)	≤ 1 mg/l and/or
Chronic NOEC or EC _x (for algae or other aquatic plants)	≤ 1 mg/l

Note 2: When classifying substances as Acute 1 and/or Chronic 1 it is necessary at the same time to indicate an appropriate M factor to apply the summation method.

Note 4: Lack of degradability is based on either a lack of ready biodegradability or other evidence of lack rapid degradation. When **no useful data on degradability** are available, either experimentally determined or estimated data, the substance should be **regarded as not rapidly degradable**



Chronic Classification Criteria

GHS
Table 4.1.1

(b) Long-term (chronic) aquatic hazard

(ii) **Rapidly degradable** substances for which there are adequate chronic toxicity data available

Category Chronic 1: (Note 2)	
Chronic NOEC or EC _x (for fish)	≤ 0.01 mg/l and/or
Chronic NOEC or EC _x (for crustacea)	≤ 0.01 mg/l and/or
Chronic NOEC or EC _x (for algae or other aquatic plants)	≤ 0.01 mg/l
Category Chronic 2:	
Chronic NOEC or EC _x (for fish)	≤ 0.1 mg/l and/or
Chronic NOEC or EC _x (for crustacea)	≤ 0.1 mg/l and/or
Chronic NOEC or EC _x (for algae or other aquatic plants)	≤ 0.1 mg/l
Category Chronic 3:	
Chronic NOEC or EC _x (for fish)	≤ 1 mg/l and/or
Chronic NOEC or EC _x (for crustacea)	≤ 1 mg/l and/or
Chronic NOEC or EC _x (for algae or other aquatic plants)	≤ 1 mg/l

TDG
Table 2.9.1

(b) Long-term (chronic) aquatic hazard

(ii) **Rapidly degradable** substances for which there are adequate chronic toxicity data available

Category Chronic 1: (Note 2)	
Chronic NOEC or EC _x (for fish)	≤ 0.01 mg/l and/or
Chronic NOEC or EC _x (for crustacea)	≤ 0.01 mg/l and/or
Chronic NOEC or EC _x (for algae or other aquatic plants)	≤ 0.01 mg/l
Category Chronic 2:	
Chronic NOEC or EC _x (for fish)	≤ 0.1 mg/l and/or
Chronic NOEC or EC _x (for crustacea)	≤ 0.1 mg/l and/or
Chronic NOEC or EC _x (for algae or other aquatic plants)	≤ 0.1 mg/l

Note 2: When classifying substances as Acute 1 and/or Chronic 1 it is necessary at the same time to indicate an appropriate M factor to apply the summation method.



Chronic Classification Criteria

GHS Table 4.1.1

(b) Long-term (chronic) aquatic hazard
(iii) Substances for which adequate chronic toxicity data are not available

Category Chronic 1: (note 2)	
96 hr LC ₅₀ (for fish)	≤ 1 mg/l and/or
48 hr EC ₅₀ (for crustacea)	≤ 1 mg/l and/or
72 or 96hr ErC ₅₀ (for algae or other aquatic plants)	≤ 1 mg/l (Note 3)
and the substance is not rapidly degradable and/or the experimentally determined BCF is ≥ 500 (or, if absent, the log K _{ow} ≥ 4). (Notes 4 and 5)	
Category Chronic 2:	
96 hr LC ₅₀ (for fish)	> 1 but ≤ 10 mg/l and/or
48 hr EC ₅₀ (for crustacea)	> 1 but ≤ 10 mg/l and/or
72 or 96hr ErC ₅₀ (for algae or other aquatic plants)	> 1 but ≤ 10 mg/l (Note 3)
and the substance is not rapidly degradable and/or the experimentally determined BCF is ≥ 500 (or, if absent, the log K _{ow} ≥ 4). (Notes 4 and 5)	
Category Chronic 3:	
96 hr LC ₅₀ (for fish)	> 10 but ≤ 100 mg/l and/or
48 hr EC ₅₀ (for crustacea)	> 10 but ≤ 100 mg/l and/or
72 or 96hr ErC ₅₀ (for algae or other aquatic plants)	> 10 but ≤ 100 mg/l (Note 3)
and the substance is not rapidly degradable and/or the experimentally determined BCF is ≥ 500 (or, if absent, the log K _{ow} ≥ 4). (Notes 4 and 5).	

TDG Table 2.9.1

(b) Long-term (chronic) aquatic hazard
(iii) Substances for which adequate chronic toxicity data are not available

Category Chronic 1: (see Note 2)	
96 hr LC ₅₀ (for fish)	≤ 1 mg/l and/or
48 hr EC ₅₀ (for crustacea)	≤ 1 mg/l and/or
72 or 96hr ErC ₅₀ (for algae or other aquatic plants)	≤ 1 mg/l (Note 3)
and the substance is not rapidly degradable and/or the experimentally determined BCF is ≥ 500 (or, if absent, the log K _{ow} ≥ 4). (Notes 4 and 5)	
Category Chronic 2:	
96 hr LC ₅₀ (for fish)	> 1 but ≤ 10 mg/l and/or
48 hr EC ₅₀ (for crustacea)	> 1 but ≤ 10 mg/l and/or
72 or 96hr ErC ₅₀ (for algae or other aquatic plants)	> 1 but ≤ 10 mg/l (Note 3)
and the substance is not rapidly degradable and/or the experimentally determined BCF is ≥ 500 (or, if absent, the log K _{ow} ≥ 4). (see Notes 4 and 5)	

Note 4: Lack of degradability is based on either a lack of ready biodegradability or other evidence of lack rapid degradation. When **no useful data on degradability** are available, either experimentally determined or estimated data, the substance should be **regarded as not rapidly degradable**

Note 5: Measured log K_{ow} values take precedence over estimated values and measured BCF values take precedence over log K_{ow} values.

Chronic Classification Criteria

GHS
Table 4.1.1

TDG
Table 2.9.1
Not adopted

(c) “Safety net” classification

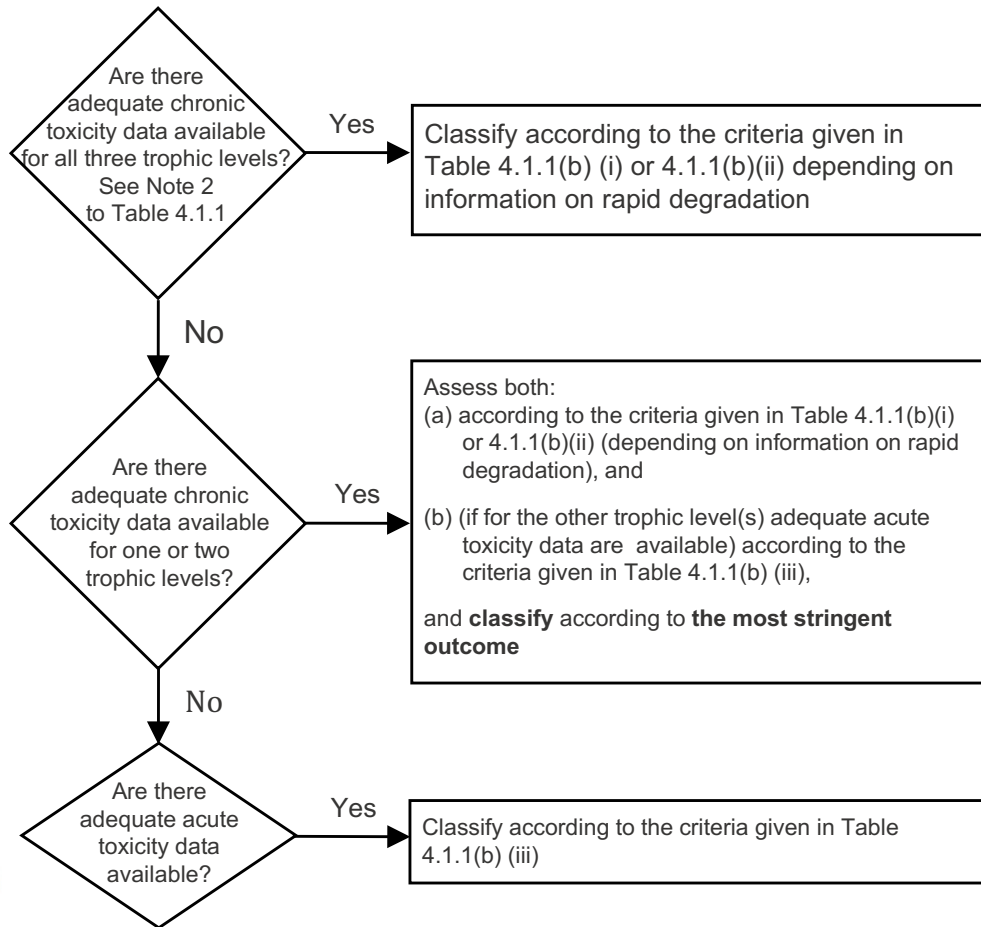
Category Chronic 4:

Poorly soluble substances for which no acute toxicity is recorded at levels up to the water solubility, and which are not rapidly degradable and have a $\log K_{ow} \geq 4$, indicating a potential to bioaccumulate, will be classified in this category unless other scientific evidence exists showing classification to be unnecessary. Such evidence would include an experimentally determined $BCF < 500$, or a chronic toxicity $NOECs > 1 \text{ mg/l}$, or evidence of rapid degradation in the environment.

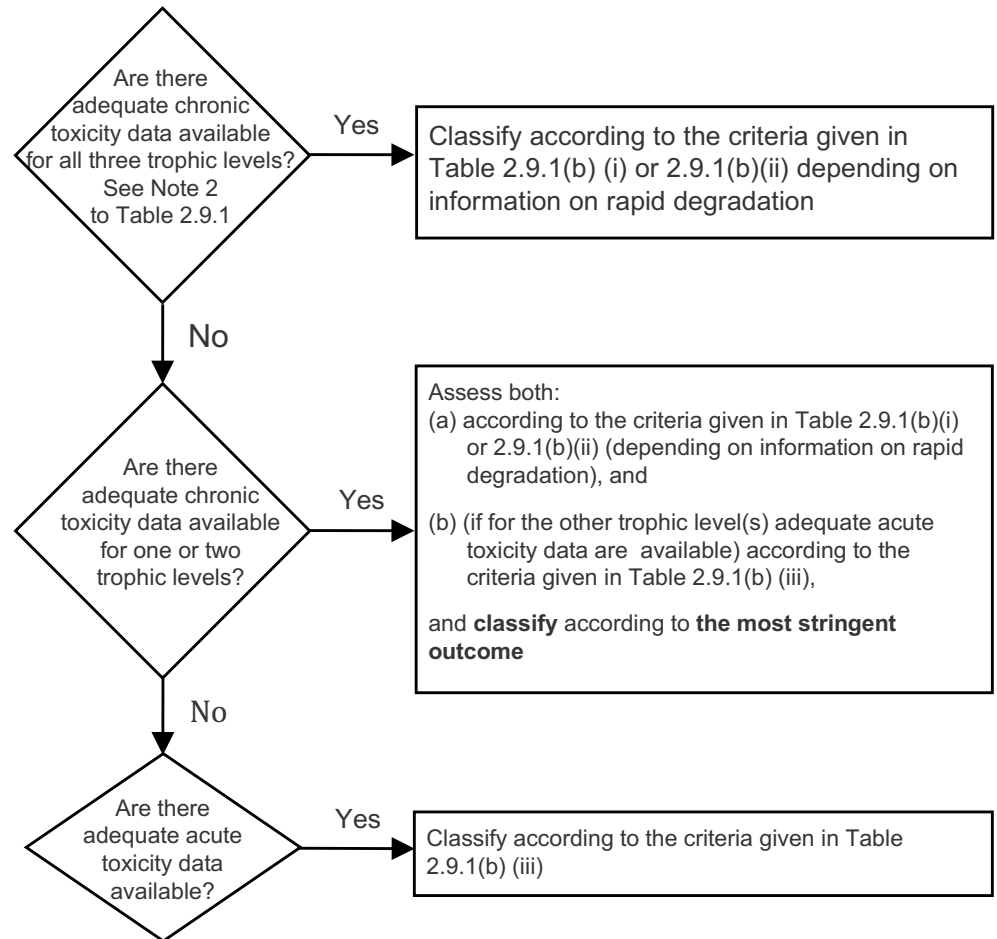


Tiered Approach to Long Term Hazard Classification

GHS
Figure 4.1.1



TDG
Figure 2.9.1



4.1 Hazardous to the Aquatic Environment Classification Criteria for Mixtures



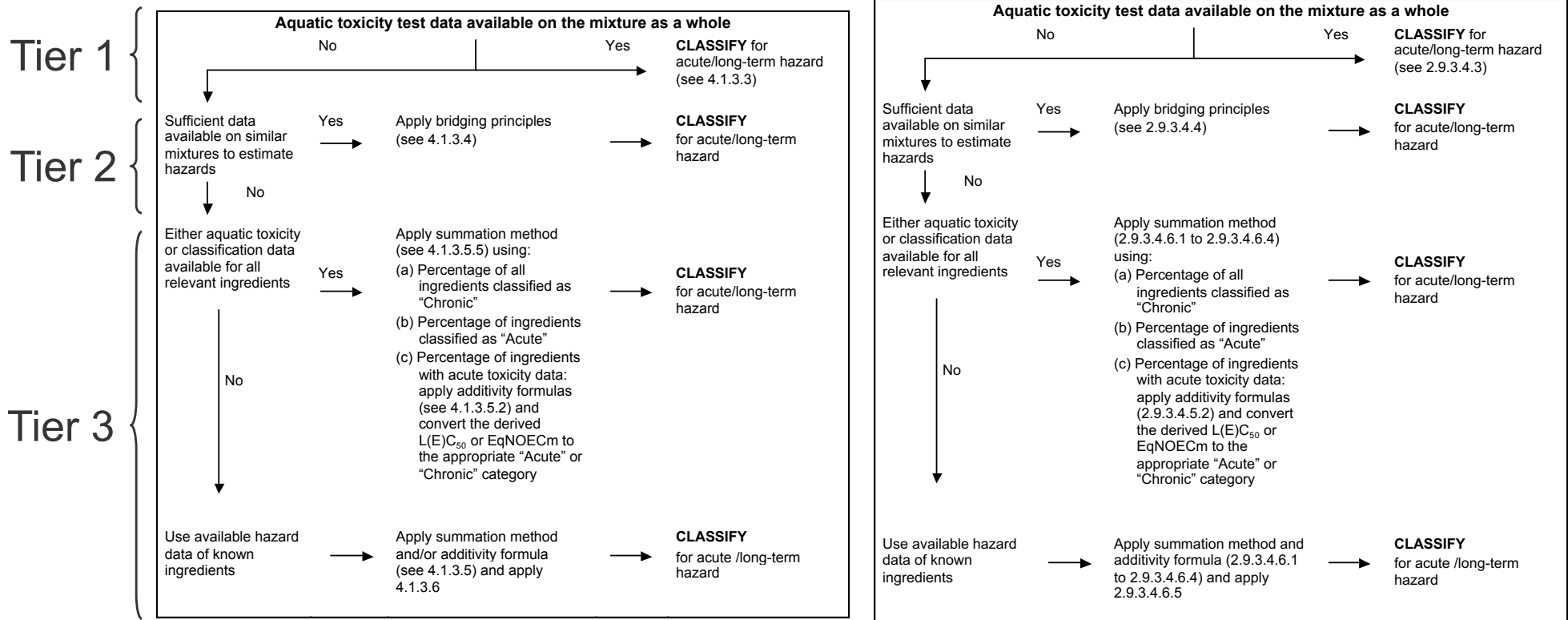
CGI

Experience the commitment®

Tiered Approach to Classifying Mixtures

GHS
Figure 4.1.2

TDG
Figure 2.9.2



Tier 1 - Tested Mixtures Criteria

(GHS 4.1.3.3) *Classification of mixtures when toxicity data are available for the complete mixture*

“When the mixture as a whole has been tested to determine its aquatic toxicity, this information can be used for classifying the mixture according to the criteria that have been agreed for substances.”

(TDG 2.9.3.4.3.1) *Classification of mixtures when toxicity data are available for the complete mixture*

“When the mixture as a whole has been tested to determine its aquatic toxicity, this information can be used for classifying the mixture according to the criteria that have been agreed for substances.”



Tier 1 - Tested Mixtures Criteria

(GHS 4.1.3.3) *Classification of mixtures when toxicity data are available for the complete mixture*

- Short-term (acute) Hazard:
 - Use Table 4.1.1 (a) Short-term (acute) aquatic hazard
- Long-term (chronic) Hazard:
 - Use Table 4.1.1. (b) Long-term (chronic) aquatic hazard/Sub-part
 - (b)(ii) Rapidly degradable substances
 - IF available information allows for the conclusion that all relevant ingredients are rapidly degradable, otherwise
 - (b)(i) Non-rapidly degradable substances
 - Use Table 4.1.1(c) “Safety net”

(TDG 2.9.3.4.3.1) *Classification of mixtures when toxicity data are available for the complete mixture*

- Short-term (acute) Hazard:
 - Use Table 2.9.1 (a) Short-term (acute) aquatic hazard
- Long-term (chronic) Hazard:
 - Use Table 2.9.1. (b) Long-term (chronic) aquatic hazard/Sub-part
 - (b)(ii) Rapidly degradable substances
 - IF available information allows for the conclusion that all relevant ingredients are rapidly degradable, otherwise
 - (b)(i) Non-rapidly degradable substances



Tier 2 - Bridging Principles

(GHS 4.1.3.4) *Classification of mixtures when toxicity data are not available for the complete mixture: bridging principles*

“Where the mixtures itself has not been tested to determine its aquatic environmental hazard, but there are sufficient data on both the individual ingredients and similar test mixtures to adequately characterize the hazards of the mixture, this data will be used in accordance with the following agreed bridging principles.”

- Dilution
- Batching
- Concentration of mixtures which are classified with the most severe classification categories (Chronic 1 and Acute 1)
- Interpolation within one toxicity category
- Substantially similar mixtures

(TDG 2.9.3.4.4) *Classification of mixtures when toxicity data are not available for the complete mixture: bridging principles*

“Where the mixtures itself has not been tested to determine its aquatic environmental hazard, but there are sufficient data on the individual ingredients and similar test mixtures to adequately characterize the hazards of the mixture, this data will be used in accordance with the following agreed bridging principles.”

- Dilution
- Batching
- Concentration of mixtures which are classified with the most severe classification categories (Chronic 1 and Acute 1)
- Interpolation within one toxicity category
- Substantially similar mixtures

Tier 3: Un-Tested Mixtures "Relevant Ingredients"

(GHS 4.1.3.1)

"Relevant ingredients" of a mixture are those which are present in a concentration $\geq 0.1\%$ (w/w) for ingredients classified as Acute and/or Chronic 1

AND

$\geq 1\%$ for other ingredients,

UNLESS

there is a presumption (e.g. in the case of highly toxic ingredients) that an ingredient present at $< 0.1\%$ can still be relevant for the classification

(TDG 2.9.3.4.1)

"Relevant ingredients" of a mixture are those which are present in a concentration $\geq 0.1\%$ (mass) for ingredients classified as Acute and/or Chronic 1

AND

$\geq 1\%$ for other ingredients,

UNLESS

there is a presumption (e.g. in the case of highly toxic ingredients) that an ingredient present at $< 0.1\%$ can still be relevant for the classification



Tier 3: Un-Tested Mixtures Criteria

(GHS 4.1.3.5) *Classification of mixtures when toxicity data are available for all ingredients or only for some ingredients of the mixture*

4.1.3.5.2 Additivity Formulas

(a) Acute Aquatic Toxicity

$$\frac{\sum C_i}{L(E)C_{50_{mix}}} = \sum_n \frac{C_i}{L(E)C_{50_i}}$$

(b) Chronic aquatic toxicity:

$$\frac{\sum C_i + \sum C_j}{EqNOEC_{mix}} = \sum_n \frac{C_i}{NOEC_i} + \sum_n \frac{C_j}{0.1 \times NOEC_j}$$

(TDG 2.9.3.4.5) *Classification of mixtures when toxicity data are available for all ingredients or only for some ingredients of the mixture*

2.9.3.4.5.2 Additivity Formulas

(a) Acute Aquatic Toxicity:

$$\frac{\sum C_i}{L(E)C_{50_{mix}}} = \sum_n \frac{C_i}{L(E)C_{50_i}}$$

(b) Chronic Aquatic Toxicity:

$$\frac{\sum C_i + \sum C_j}{EqNOEC_{mix}} = \sum_n \frac{C_i}{NOEC_i} + \sum_n \frac{C_j}{0.1 \times NOEC_j}$$



Tier 3: Application of the Acute Additivity Formula

(GHS 4.1.3.5) *Classification of mixtures when toxicity data are available for all ingredients or only for some ingredients of the mixture*

4.1.3.5.2 Additivity Formulas

(a) Acute Aquatic Toxicity

$$\frac{\sum C_i}{L(E)C_{50_{mix}}} = \sum_n \frac{C_i}{L(E)C_{50_i}}$$

where:

- C_i = concentration of ingredient i (weight percentage)
- $L(E)C_{50_i}$ = LC_{50} or EC_{50} for component i, in mg/L
- n = number of ingredients, and i is running from 1 to n;
- $L(E)C_m$ = $L(E) C_{50}$ of the part of the mixture with test data

The calculated toxicity **may** be used to assign that portion of the mixture a short-term (acute) hazard category which is then subsequently used in applying the summation method;

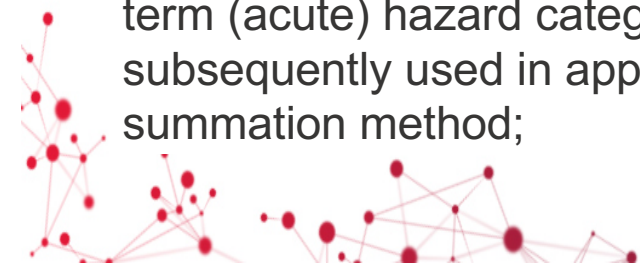
(TDG 2.9.3.4.5) *Classification of mixtures when toxicity data are available for all ingredients or only for some ingredients of the mixture*

2.9.3.4.5.2 Additivity Formulas

(a) Acute Aquatic Toxicity:

$$\frac{\sum C_i}{L(E)C_{50_{mix}}} = \sum_n \frac{C_i}{L(E)C_{50_i}}$$

The calculated toxicity **shall** be used to assign that portion of the mixture an acute hazard category which is then subsequently used in applying the summation method;



Tier 3: Application of the Chronic Additivity Formula

(GHS 4.1.3.5) *Classification of mixtures when toxicity data are available for all ingredients or only for some ingredients of the mixture*

4.1.3.5.2 Additivity Formulas

(b) Chronic aquatic toxicity:

$$\frac{\sum C_i + \sum C_j}{EqNOEC_{mix}} = \sum_n \frac{C_i}{NOEC_i} + \sum_n \frac{C_j}{0.1 \times NOEC_j}$$

where:

- C_i = concentration of ingredient i (weight percentage) covering the rapidly degradable ingredients;
- C_j = concentration of ingredient j (weight percentage) covering the non-rapidly degradable ingredients;
- NOEC_i = NOEC (or other recognized measures for chronic toxicity) for ingredient i covering the rapidly degradable ingredients, in mg/l;
- NOEC_j = NOEC (or other recognized measures for chronic toxicity) for ingredient j covering the non-rapidly degradable ingredients, in mg/l;
- n = number of ingredients, and i and j are running from 1 to n;
- EqNOEC_m = Equivalent NOEC of the part of the mixture with test data;

The calculated equivalent toxicity **may** be used to assign that portion of the mixture a long-term (chronic) hazard category, ..., which is then subsequently used in applying the summation method;

(TDG 2.9.3.4.5) *Classification of mixtures when toxicity data are available for all ingredients or only for some ingredients of the mixture*

2.9.3.4.5.2 Additivity Formulas

(b) Chronic Aquatic Toxicity:

$$\frac{\sum C_i + \sum C_j}{EqNOEC_{mix}} = \sum_n \frac{C_i}{NOEC_i} + \sum_n \frac{C_j}{0.1 \times NOEC_j}$$

The calculated equivalent toxicity **shall** be used to assign that portion of the mixture a long-term hazard category, ..., which is then subsequently used in applying the summation method;

Application of the Additivity Formula

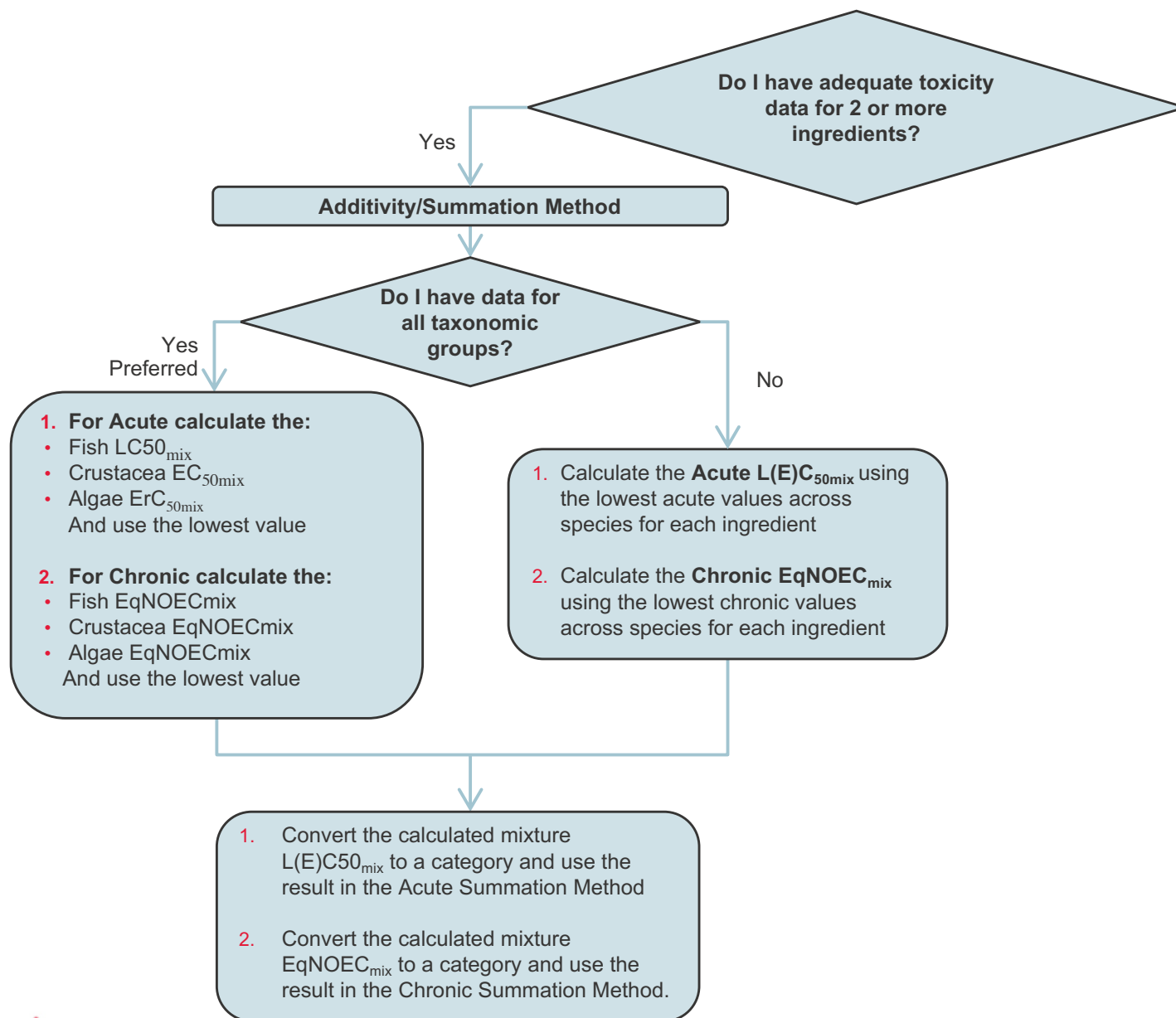
$$\frac{\sum C_i}{L(E)C_{50_{mix}}} = \sum_n \frac{C_i}{L(E)C_{50_i}} \quad \frac{\sum C_i + \sum C_j}{EqNOEC_{mix}} = \sum_n \frac{C_i}{NOEC_i} + \sum_n \frac{C_j}{0.1 \times NOEC_j}$$

- It is **preferable** to calculate the toxicity of this part of the mixture using each ingredient toxicity values that relate to the same taxonomic group (i.e. fish, crustacean or algae) and then use the highest toxicity (lowest value) obtained (i.e. use the most sensitive of the three groups)
- However, when the **toxicity data** for each ingredient **are not available** in the same taxonomic group, select the higher toxicity (from the most sensitive test organism)

$$\frac{\sum C_i + \sum C_j}{EqNOEC_{mix}} = \sum_n \frac{C_i}{NOEC_i} + \sum_n \frac{C_j}{0.1 \times NOEC_j}$$

- The equivalent toxicity, $EqNOEC_m$, reflects the fact that non-rapidly degrading substances are classified one hazard category level more “severe” than rapidly degrading substances.
- The calculated equivalent toxicity, $EqNOEC_m$, **may be used** to assign that portion of the mixture a long-term hazard category, in accordance **with the criteria for rapidly degradable substances** (Table 4.1.1 (b)(ii)), which is then subsequently used in applying the summation method.

Which calculation method do I use for hazard classification?



Tier 3: Un-Tested Mixtures Criteria

(GHS 4.1.3.5) *Classification of mixtures when toxicity data are available for all ingredients or only for some ingredients of the mixture*

4.1.3.5.5 Summation Method

(a) Acute Aquatic Toxicity

Sum of components classified as:	Mixture is classified as
Acute 1 x M \geq 25%	Acute 1
(M x 10 x Acute 1) + Acute 2 \geq 25%	Acute 2
(M x 100 x Acute 1) + (10 x Acute 2) + Acute 3 \geq 25%	Acute 3

(b) Chronic aquatic toxicity:

Sum of components classified as:	Mixture is classified as
Chronic 1 x M \geq 25%	Chronic 1
(M x 10 x Chronic 1) + Chronic 2 \geq 25%	Chronic 2
(M x 100 x Chronic 1) + (10 x Chronic 2) + Chronic 3 \geq 25%	Chronic 3
Chronic 1 + Chronic 2 + Chronic 3 + Chronic 4 \geq 25%	Chronic 4

(TDG 2.9.3.4.5) *Classification of mixtures when toxicity data are available for all ingredients or only for some ingredients of the mixture*

2.9.3.4.6 Summation Method

(a) Acute Aquatic Toxicity:

Sum of components classified as:	Mixture is classified as
Acute 1 x M \geq 25%	Acute 1

(b) Chronic Aquatic Toxicity:

Sum of components classified as:	Mixture is classified as
Chronic 1 x M \geq 25%	Chronic 1
(M x 10 x Chronic 1) + Chronic 2 \geq 25%	Chronic 2



Determination of the M-Factor

Table 4.1.5 Multiplying factors for highly toxic ingredients of mixtures

Acute toxicity L(E)C ₅₀ value	M factor	Chronic toxicity NOEC value	M factor	
			NRD ^a ingredients	RD ^b ingredients
0.1 < L(E)C ₅₀ ≤ 1	1	0.01 < NOEC ≤ 0.1	1	-
0.01 < L(E)C ₅₀ ≤ 0.1	10	0.001 < NOEC ≤ 0.01	10	1
0.001 < L(E)C ₅₀ ≤ 0.01	100	0.0001 < NOEC ≤ 0.001	100	10
0.0001 < L(E)C ₅₀ ≤ 0.001	1000	0.00001 < NOEC ≤ 0.0001	1000	100
0.00001 < L(E)C ₅₀ ≤ 0.0001	10000	0.000001 < NOEC ≤ 0.00001	10000	1000
(continue in factor 10 intervals)		(continue in factor 10 intervals)		

^a Non-rapidly degradable

^b Rapidly degradable

Table 2.9.5 Multiplying factors for highly toxic ingredients of mixtures

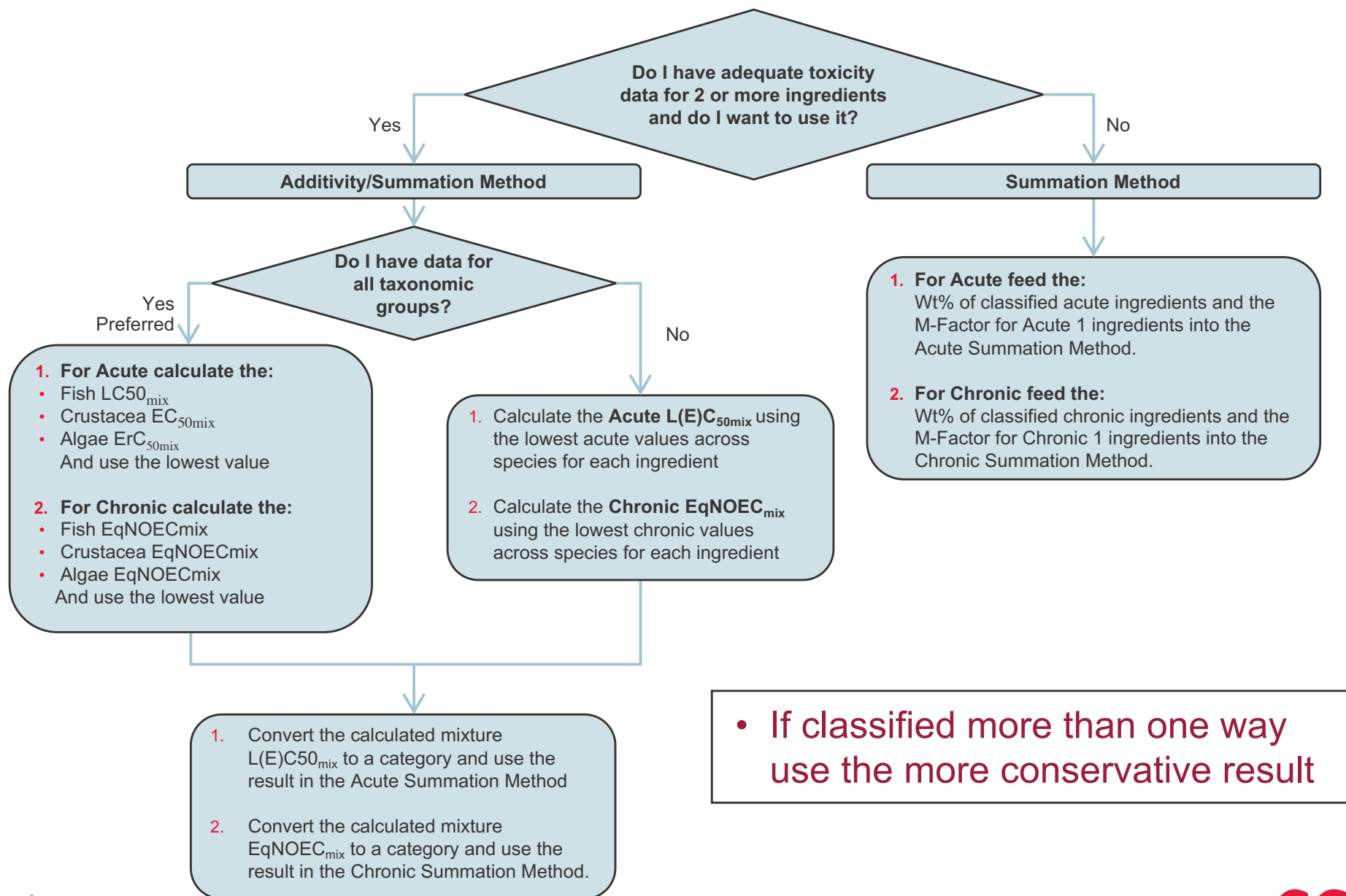
Acute toxicity L(E)C ₅₀ value	M factor	Chronic toxicity NOEC value	M factor	
			NRD ^a ingredients	RD ^b ingredients
0.1 < L(E)C ₅₀ ≤ 1	1	0.01 < NOEC ≤ 0.1	1	-
0.01 < L(E)C ₅₀ ≤ 0.1	10	0.001 < NOEC ≤ 0.01	10	1
0.001 < L(E)C ₅₀ ≤ 0.01	100	0.0001 < NOEC ≤ 0.001	100	10
0.0001 < L(E)C ₅₀ ≤ 0.001	1000	0.00001 < NOEC ≤ 0.0001	1000	100
0.00001 < L(E)C ₅₀ ≤ 0.0001	10000	0.000001 < NOEC ≤ 0.00001	10000	1000
(continue in factor 10 intervals)		(continue in factor 10 intervals)		

^a Non-rapidly degradable

^b Rapidly degradable



Which calculation method do I use for hazard classification?



Ingredients With Unknown Aquatic Toxicity

(GHS 4.1.3.6) *Classification of mixtures with ingredients without any useable information*

In the event that **no usable information** on acute and/or chronic aquatic toxicity is available for one or more relevant ingredients ... **classify based on the known ingredients only**.... with the additional statement.

“x % of the mixture consists of ingredient(s) of unknown hazards to the aquatic environment”

Competent authority can decide if the statement is communicated on the label, SDS or both, or to leave the choice to the supplier.

(TDG 2.9.3.4.6.5.1) *Classification of mixtures with ingredients without any useable information*

In the event that **no usable information** on acute and/or chronic aquatic toxicity is available for one or more relevant ingredients ... **classify based on the known ingredients only**.... with the additional statement.

“x percent of the mixture consists of ingredient(s) of unknown hazards to the aquatic environment”

Conclusion

The GHS and TDG classification criteria are harmonized....

However, as expected, the communication elements/processes associated with classification are different because of the different intended target audiences between a GHS implementation and the TDG






When Classified ...

GHS

TDG

Harmonized Hazard Communication Elements

Classification		Labelling		
Hazard class	Hazard category	Pictogram	Signal word	Hazard statement
		GHS		
Hazards to the aquatic environment Short-term (acute)	Acute 1		Warning	Very toxic to aquatic life
	Acute 2	No pictogram	No signal word	Toxic to aquatic life
	Acute 3	No pictogram	No signal word	Harmful to aquatic life

Classification		Labelling		
Hazard class	Hazard category	Pictogram	Signal word	Hazard statement
		GHS		
Hazards to the aquatic environment Long-term (chronic)	Chronic 1		Warning	Very toxic to aquatic life with long lasting effects
	Chronic 2		No signal word	Toxic to aquatic life with long lasting effects
	Chronic 3	No pictogram	No signal word	Harmful to aquatic life with long lasting effects
	Chronic 4	No pictogram	No signal word	May cause long lasting harmful effects to aquatic life

- From a transport perspective if the substance or mixture satisfy the criteria for Acute 1 and/or Chronic 1 or Chronic 2 then for transport they are classified as: **“environmentally hazardous substances (aquatic environment)”**
 - Application of the proper shipping names:
 - UN3077 Environmentally Hazardous Substance, Solid, N.O.S.
 - UN3082 Environmentally Hazardous Substance, Liquid, N.O.S.
- is for “environmentally hazardous substances (aquatic environment)” that do not meet the classification criteria of any other class or another substance within Class 9.

Additional TDG Considerations...

UN 3077 and 3082 may also be used for:

1. Wastes not otherwise subject to TDG Regulations but which are covered under the *Basel Convention on the Control of Transboundary Movements of Hazardous Wastes and their Disposal* and
2. Substances designated to be environmentally hazardous substances by the competent authority of the country of origin, transit or destination which do not meet the criteria for an environmentally hazardous substance according to these Regulations or for any other hazard class





Paul Brigandi
Paul.Brigandi@cgi.com
703.267.2175

